

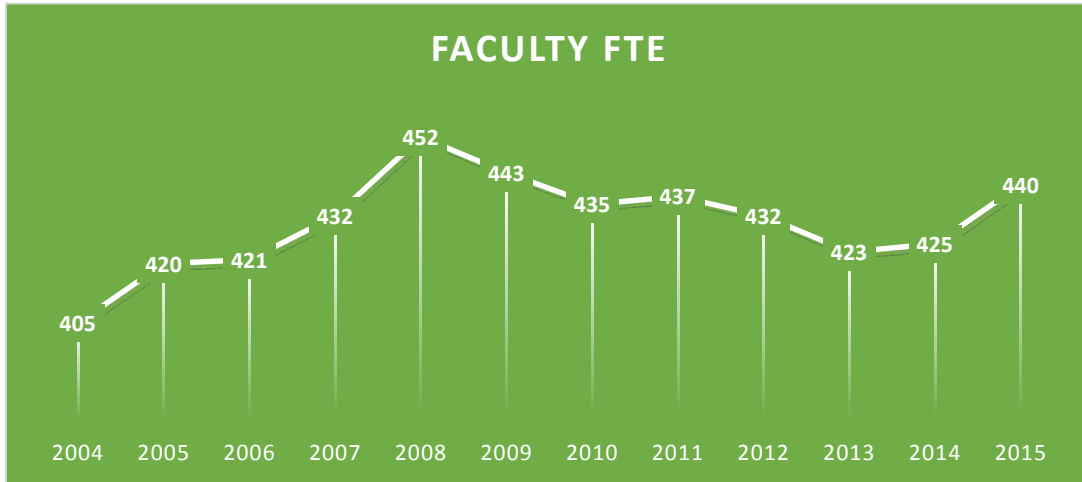
By the Numbers

Revised: April 13, 2016

MISSOURI
S&T



Faculty FTE/On Campus Student Enrollment

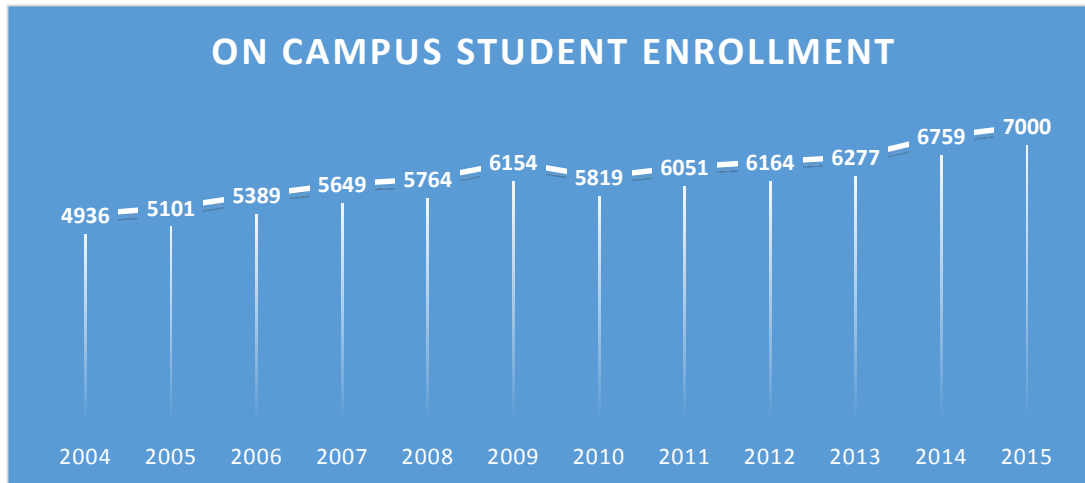


Faculty FTE chart does not include open vacancies, GTA, GRA, or GA

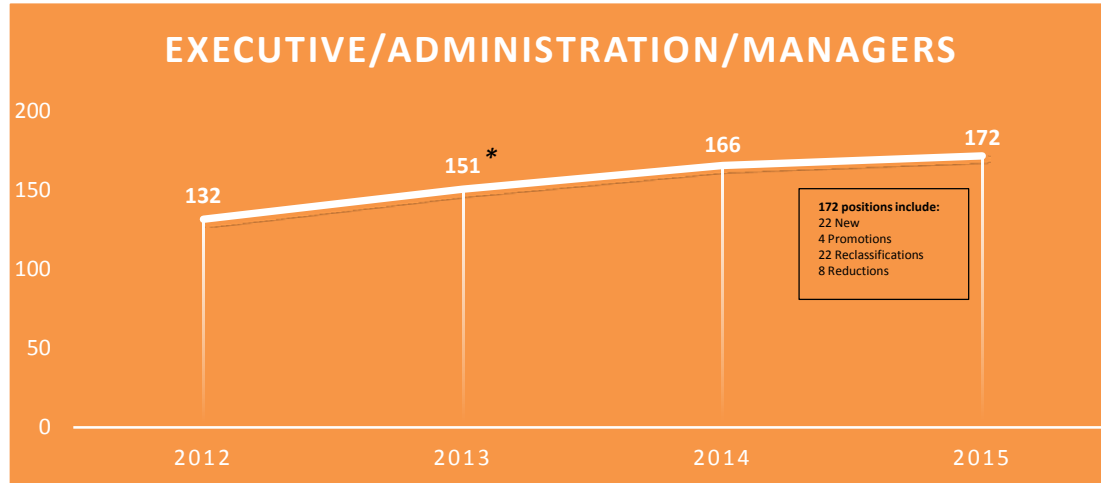
*Statistics also reflect the following:

- 10 retirements in 2012
- 7 retirements in 2013
- 6 retirements in 2014

In 2013-2014, reclassified faculty who spend more than 50% of time in administration



Executive/Administration/Managers



Examples of positions within the above categories: head coaches, police lieutenants, custodial supervisors, registrar

Director-level positions: athletics, environmental health, student support, finance, IT, advancement

Manager-level positions: IT, media production, business administration, research technical services, human resources, reactor manager

****In 2013 – 10 head coaches were reclassified from faculty to staff***

****Divisional accounting for the 40 new positions from 2012-2015: Advancement, Marketing and Communications +11 (6 were new, 3 were promotion, 2 were reclassification); Chancellor's Office +1 (new); College of Arts, Sciences, and Business +1 (new); College of Engineering and Computing +1 (new); Enrollment Management -2; Finance and Administration +7 (3 were new, 4 were reclassification); Global Learning +2 (1 new, 1 reclassification); Global and Strategic Partnerships +3 (2 new, 1 reclassification); Human Resources +4 (new); IT -3; Provost -2; Sponsored Programs +2 (1 new, 1 reclassification); Student Affairs +16 (2 new, 1 promotion, 13 were reclassification); and Undergraduate Studies -1**